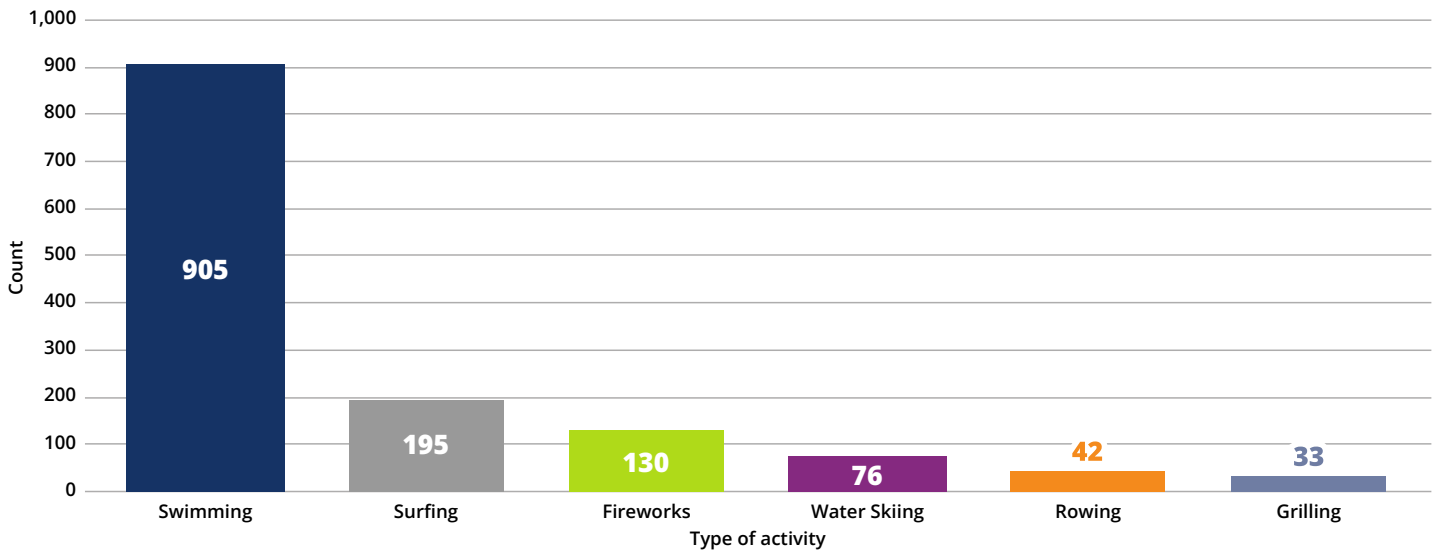


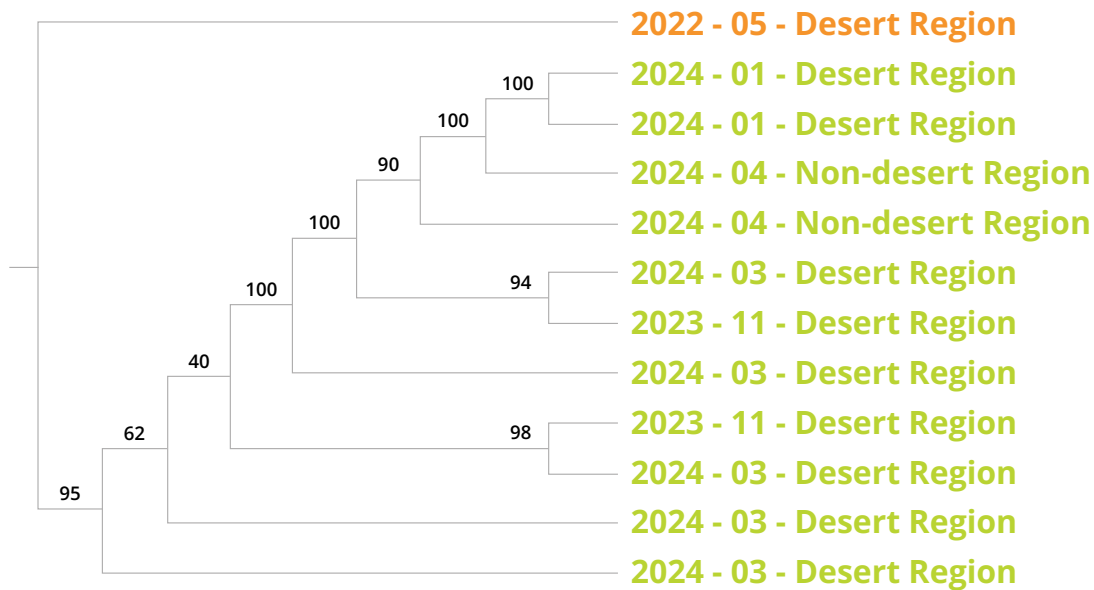
Swimming was the Summer Activity with the Highest Number of Injury-related ED Visits between June and September, 2018-2022



Source: Department of Health Care Access and Information (2018-2022)

Notes: Activities were classified using ICD-10 codes Y93 and W39 applied to an injury subset that only includes injuries specifying an initial encounter or a missing 7th character.

An Outbreak of Extensively Drug-resistant (XDR) Shigellosis Has been Identified via Whole Genome Sequencing, that is Largely Affecting Males in the Desert Area



Phylogenetic tree of an XDR-Shigellosis cluster in males in the desert area

Source: System for Enteric Disease Response, Investigation, and Coordination (SEDRIC), retrieval date: 6/25/2024. National Center for Biotechnology Information (NCBI)

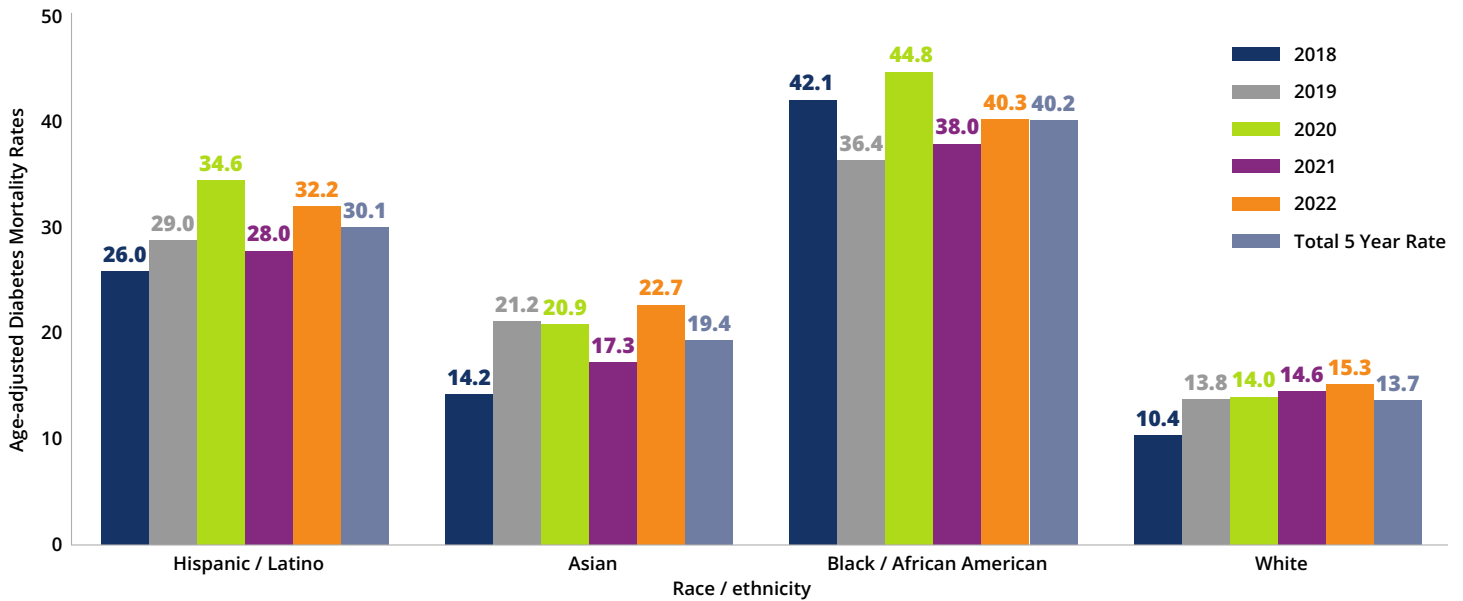
Notes: XDR Shigella bacteria are strains that are resistant to all commonly recommended empiric and alternative antibiotics

— azithromycin, ciprofloxacin, ceftriaxone, trimethoprim-sulfamethoxazole (TMP-SMX), and ampicillin.

The numbers on the branches of the phylogenetic tree are bootstrap values (0-100). Genetic relationships are strongly supported with bootstrap values > 90.

This whole genome sequencing was done in collaboration between Epidemiology and Public Health Lab

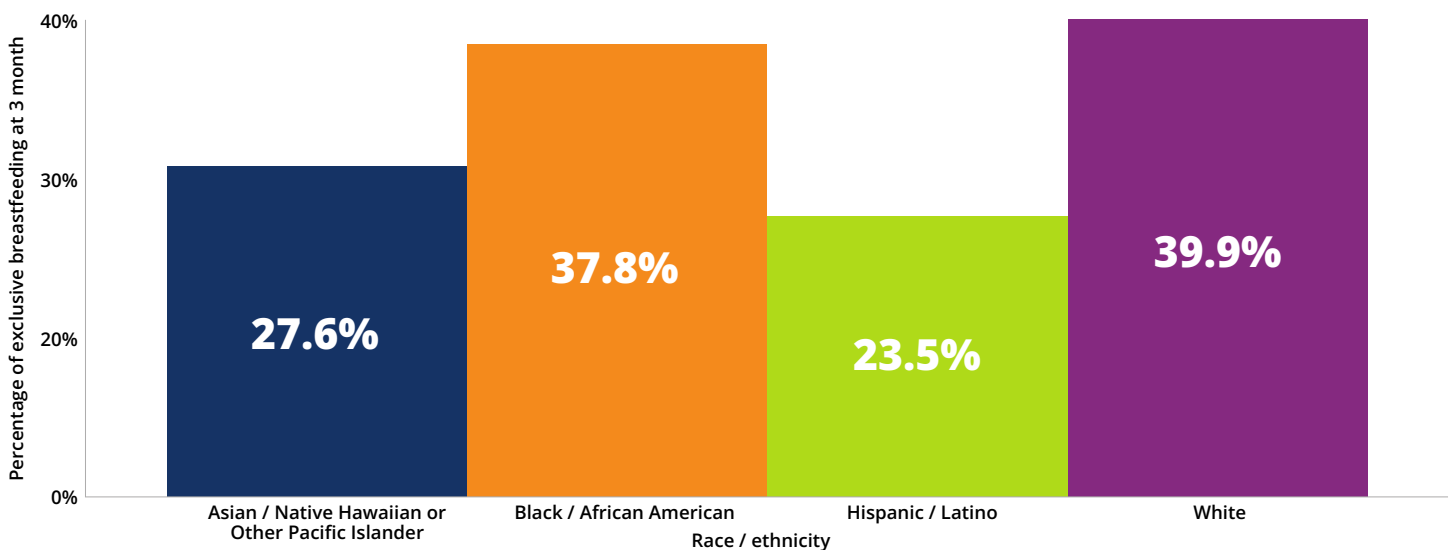
Age-adjusted Mortality Rates of Diabetes are Higher in Black / African American Groups Compared to Other Race / Ethnicity Groups



Source: California Department of Public Health (CDPH), Center for Health Statistics and Informatics (CHSI), (2018-2022). California Integrated Vital Records System (Cal-IVRS). California Comprehensive Death File (CCDF) 2018-2022.

Notes: Native Hawaiian / Pacific Islander, American Indian / Alaska Native, or Multiple Race data are not presented due to the small number of cases observed for these populations, which can lead to distorted comparisons with other groups.

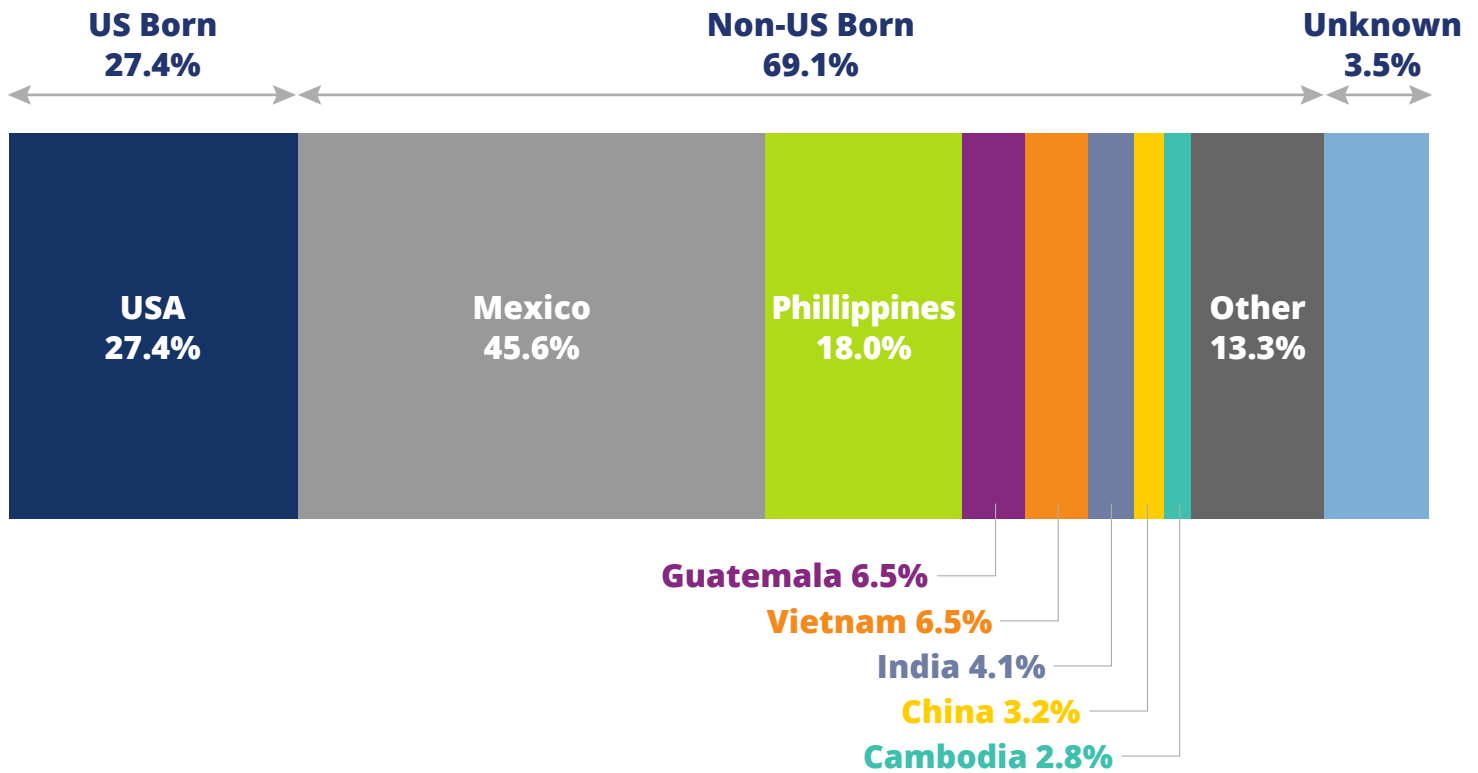
White Birthing Parents Have Higher Rates of Exclusive Breastfeeding at 3 Months, Followed by Black / African American Birthing Parents (2019-2021)



Source: California Department of Public Health, Center for Family Health, Maternal, Child and Adolescent Health Division, Breastfeeding Intention and Duration Dashboard, Last Modified November 2023. [go.cdph.ca.gov/Breastfeeding-Intention-and-Duration-Dashboard](https://www.cdph.ca.gov/Breastfeeding-Intention-and-Duration-Dashboard)

Notes: Exclusive breastfeeding at 3 months is defined as solely feeding infant breast milk without any formula supplementation, other liquids, or solid food, for at least three months after delivery. Includes only race/ethnicity groups with stable estimates. Excludes non county residents, birthing parents younger than 15 years old, and plural births greater than triplets. Data was collected and weighted using methods listed on <https://www.cdph.ca.gov/Programs/CFH/DMCAH/surveillance/Pages/Breastfeeding-Intention-and-Duration.aspx>

Tuberculosis Cases by National Origin in Riverside County, 2019-2023



Source: California Reportable Disease Information Exchange (CalREDIE), 2019-2023.
 Notes: Majority of active TB cases were born outside the United States

Major Categories of Non-infectious Respiratory Diseases and Related Deaths in Riverside County in 2022

Type of condition	As a primary cause	As a contributing cause*
Respiratory cancers	734	803
Chronic lower respiratory diseases	1,040	2,469
Other respiratory diseases principally affecting the interstitium	186	606
Total number of deaths related to these primary and contributing causes in 2022 (an individual may appear in both columns)	1,960	**

** These conditions were listed among the contributing causes of death for 3,519 individuals. Some individuals appear in more than one category.

Source: CalIVRS_DATA_RAW_Deaths_2022, WHO ICD-10 Cause of Death Codes
 Notes: *An individual may be affected by multiple categories, including causes not listed here. The annotations on the table are needed to understand the data.

